



# LEVEE PROTECTION PLANNING AND IMPROVEMENTS PROJECT

Improving Today and Preparing for Tomorrow

Foster City Council Meeting  
August 20, 2018



**Schaaf & Wheeler**  
CONSULTING CIVIL ENGINEERS





# Purpose of Meeting

Seeking policy direction on general design guidelines for trail improvements, wall treatments and landscaping to finalize levee design.

- ☐ Recommendations and Planning Commission Feedback
  - ☐ Trail Improvements and Amenities
  - ☐ Wall Treatment Options
  - ☐ Planting Concepts
  - ☐ Bay and Trail Access



# Recommendations and Planning Commission Feedback

- ☐ Importance of function over form and cost implications
- ☐ Minimize the monotony of appearance (create interest)
- ☐ Vary wall height, treatment and flooring changes (articulation)
- ☐ Project identity and branding (perhaps a repeating pattern)
- ☐ Use relief treatment (different species and plants)
- ☐ Landscaping should be drought and salt tolerant
- ☐ Maximize the retention of existing ice plant



# Bay Trail Improvements



**Legend**

**Type**

10-FT AC Path with 4-FT DG Shoulder (18-FT Total)

12-FT AC Path with 3-FT DG Shoulder (18-FT Total)

12-FT Path, No DG Shoulder Inboard Side (15-FT Total)

No Improvements

Service Layer Credits: Source: Esri, DigitalGlobe, GeoEye, Earthstar Geographics, CNES/Airbus DS, USDA, USGS, AeroGRID, IGN, and the GIS User Community



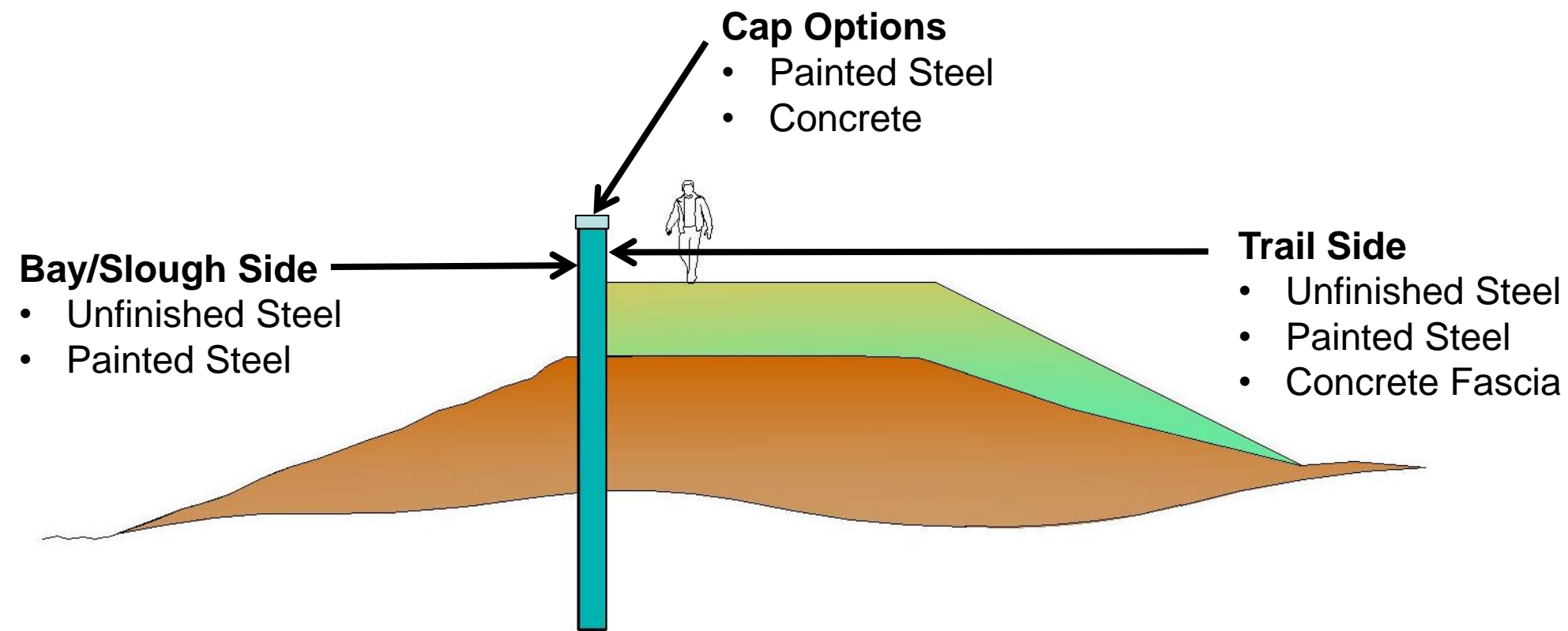
# Signage and Amenities



- information kiosk
- bench
- wheelchair pad
- pet litter station
- trash/recycling bin
- bike rack for 2 bikes
- informational signs
- bike repair stations



# Wall Treatments



Painted Steel with Cap



Concrete Cap



Weathered Steel



# Wall Treatments



Post-Project



Existing



# Wall Treatments



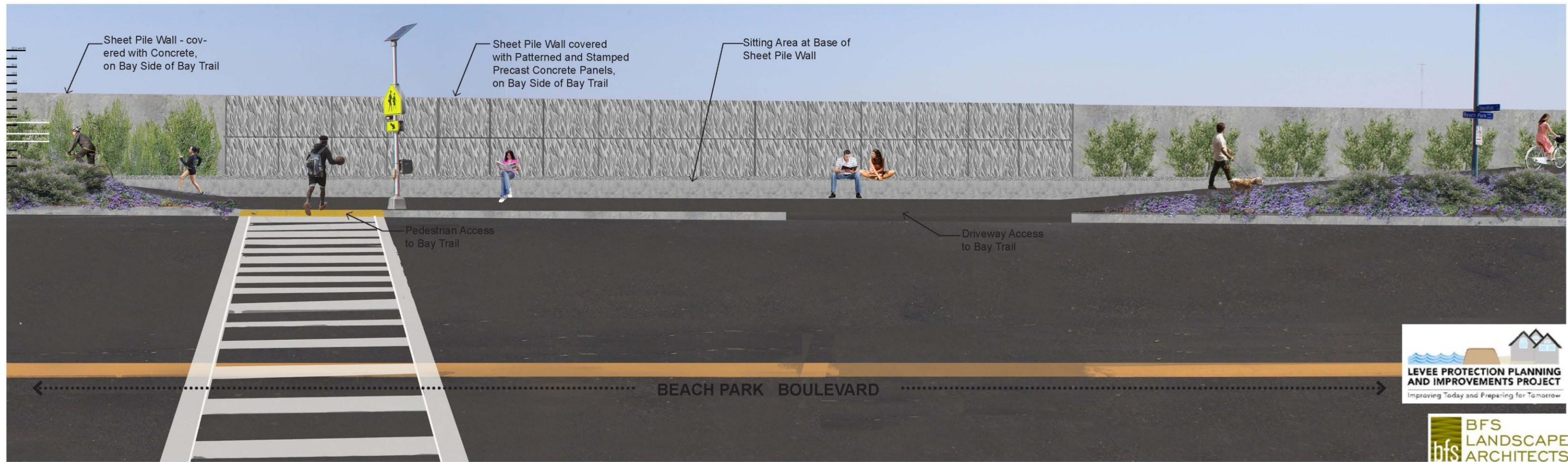
Post-Project



Existing



# Wall Treatments



Post-Project



Existing



# Wall Treatments



Existing



Post-Project



# Articulation



Typical View of Access along Beachpark Boulevard  
Levee Wall - Concrete Wall with Concrete Cap and 10'-0" Wide Glass Openings at Access Points



Typical View of Access along Beachpark Boulevard  
Levee Wall - Grey Sheetpile Wall with Steel Cap and 10'-0" Wide Glass Openings at Access Points





# Planting Concepts



*Bolboschoenus maritimus*  
(Alkali Bulrush)



*Sisyrinchium bellum*  
(Blue-eyed Grass)



*Solidago californica*  
(California Goldenrod)



*Stipa lepida*  
(foothill needle grass)



*Achillea millefolium*  
(Common Yarrow)



*Ambrosia psilostachya*  
(Western Ragweed)



*Artemisia californica*  
(California Sagebrush)



*Artemisia douglasiana*  
(Mugwort)



*Aster chilensis*  
(California Aster)



*Baccharis pilularis*  
(Coyote Brush)



*Deschamsia caespitosa*  
'Holciformis'  
(Pacific hairgrass)



*Stipa pulchra*  
(Purple Needle Grass)



*Vulpia microstachys*  
(Small Fescue)



*Wyethia angustifolia*  
(Mule's Ears)



*Carex praegracilis*  
(Meadow Sedge)



*Carpobrotus edulis*  
(Ice Plant)



*Ceanothus gloriosus*  
(Ceanothus)



*Ceanothus griseus* 'Horizontalis'  
(Yankee Point Ceanothus)



*Ceanothus thyrsiflorus*  
(Creeping Blue Blossom)



*Clarkia rubicunda*  
(Farewell to Spring)

Retain existing ice plant with new edge treatments.

New landscaping focused on access and focal points.

Planting types chosen based on considerations for:

1. Drought tolerance
2. Aesthetic appeal
3. Practical maintenance and cost



*Eriogonum latifolium*  
(Coastal Eriogonum)



*Eriogonum nudum*  
(Naked Buckwheat)



*Eschscholzia californica* 'Maritima'  
(California Coastal Poppy)



*Festuca idahoensis*  
(Fescue Bunchgrass)



*Festuca rubra* 'Molate'  
(Molate Red Fescue)



*Frankenia salina*  
(Alkali Heath)



*Grindelia stricta* 'Angustifolia'  
(Pacific Gumpiant)



*Hordeum brachyantherum*  
(Salt Meadow Barley)



*Juncus patens*  
(Wire Grass)



*Limonium californicum*  
(Marsh Rosemary)



*Mimulus aurantiacus*  
(Sticky Monkey Flower)



*Penstemon centranthifolius*  
(Scarlet Bugler)



*Ranunculus californicus*  
(California Buttercup)



*Salvia mellifera* 'Repens'  
(Creeping Black Sage)



*Salvia spathacea*  
(Hummingbird Sage)



*Sarcocornia pacifica*  
(Pickleweed)



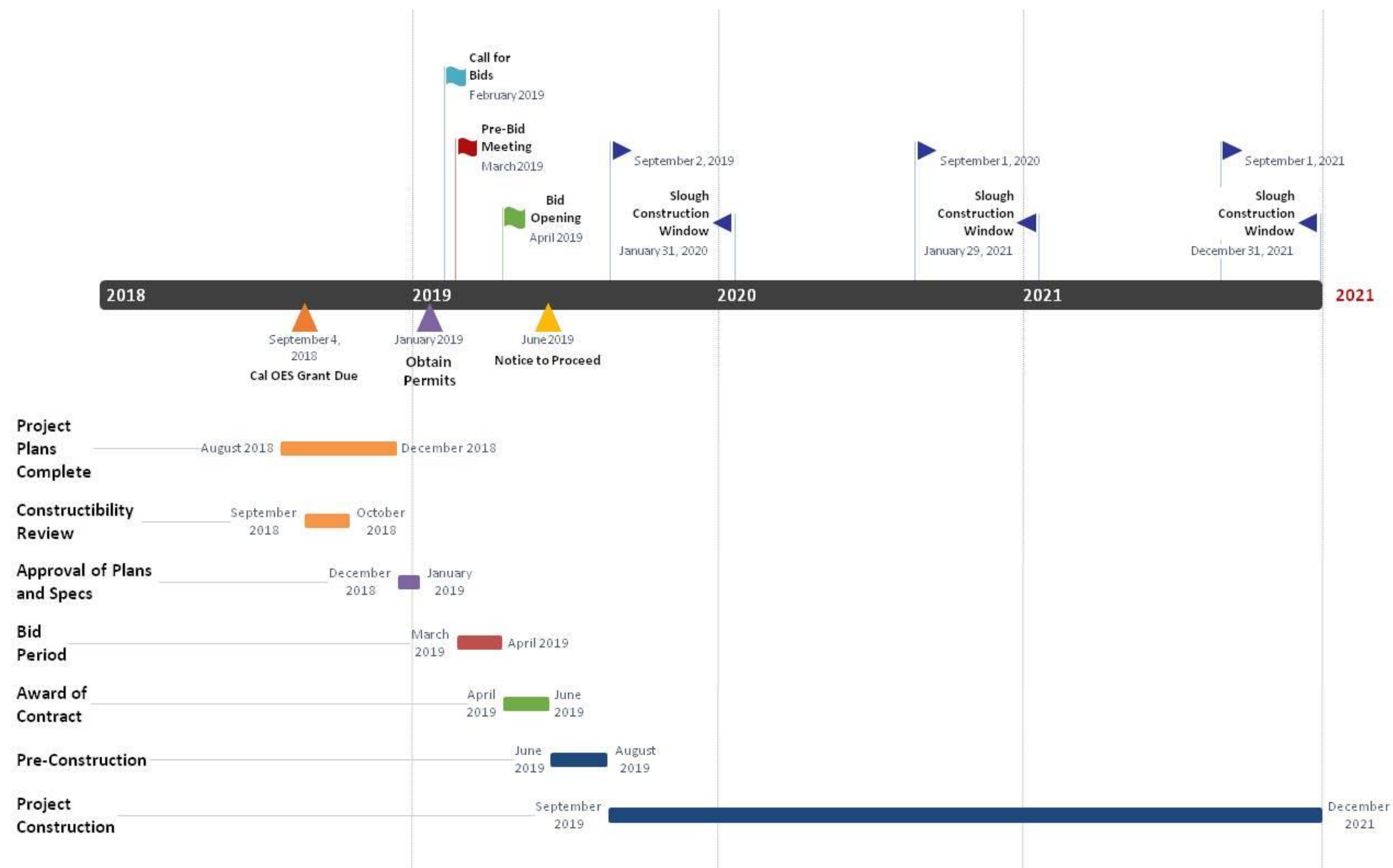
*Schoenoplectus californicus*  
(California Bulrush)



*Sidalcea malviflora*  
(Checkerbloom)



# Upcoming Project Milestones







# LEVEE PROTECTION PLANNING AND IMPROVEMENTS PROJECT

Improving Today and Preparing for Tomorrow

Foster City Council Meeting  
August 20, 2018



**Schaaf & Wheeler**  
CONSULTING CIVIL ENGINEERS





# Access Points and Amenities



Service Layer Credits: Source: Esri, DigitalGlobe, GeoEye, Earthstar Geographics, CNES/Airbus DS, USDA, USGS, AeroGRID, IGN, and the GIS User Community

- Forty-nine improved access points:
  - Nine from Trail to Bay
  - Forty from street level to Trail
- Public access will be ADA-compliant:
  - Ramps; and/or
  - Stairs with handrail

Legend	
	ADA Accessible Ramp
	Stairs
	Bench
	Bike Rack
	Bicycle Repair Station
	Pet Litter Station
	Picnic Table
	Trash Receptacle
	Boat Access Ramp
	Public Parking
	Trail Access Point
	Bay Access Point



# Access Points and Amenities





# Access Points and Amenities





# Access Points and Amenities





# Access Points and Amenities





# Access Points and Amenities

