



City of Foster City

ESTERO MUNICIPAL IMPROVEMENT DISTRICT

PARKS & RECREATION DEPARTMENT

650 SHELL BLVD.

FOSTER CITY, CA 94404-2501

(650) 286-3380 • FAX (650) 345-1408

WEB SITE: <http://www.fostercity.org>

March 24, 2017

Subject: Sea Cloud Park Sea Cloud Park Project – Soccer Fields S1, S2, and Baseball Field B1 Synthetic Turf Installation, CIP 659

Dear Sea Cloud Park Neighbors,

As neighbors to Sea Cloud Park, I wanted to let you know of a Capital Improvement Project (CIP) that was approved in the City's budget and invite you to the **April 5 Parks and Recreation Committee meeting** to be held at **6:30pm in the Recreation Center** (650 Shell Boulevard) where the details of the project will be discussed. This project is being considered by the City Council in May.

If approved by City Council, we anticipate construction to begin in June with completion in September 2017. The scope of the project includes:

- Replacing natural grass sports fields with synthetic sports turf
- Grading, drainage, electrical, re-route water fountain lines, re-route irrigation main lines
- Landscaping improvements

The Parks and Recreation Department strives to balance community interests to enhance the quality of life for all residents. Anticipated community benefits with the completion of this project include:

- Estimated two (2) million gallons of water will be saved annually
- Sustainable and noninvasive landscape improvements to maintain park character
- Eliminate safety concerns related diseased trees and damage to valuable infrastructure
- Reduction in maintenance costs associated with the athletic fields
- Efficient athletic field use for the community's 3,000+ youth sports participants
- A well maintained park which contributes to the safety and security of our community

I encourage you to attend the April 5 Parks and Recreation Committee meeting and provide your feedback on this very important neighborhood project. If I can be of additional assistance, please feel free to call me at 286-3390 or e-mail me at jliu@fostercity.org.

Kind regards,

Jennifer L. Liu

Director of Parks and Recreation

Attachments: Proposed Landscape Plan
Sea Cloud Park Project



DATE: 11/27/14
 BY: RNF/PAJ
 CHECKED BY: CHMS / DC
 DATE: 03/06/17
 SCALE: 1"=30'-0"
 PLOT NO.: 14670000

PROJECT NAME
 SEA CLOUD PARK
 STAIRS AND
 PARK IMPROVEMENTS

PROJECT ADDRESS
 SEA CLOUD DR.
 FOSTER CITY
 CA, 94404

PLANTING PLAN

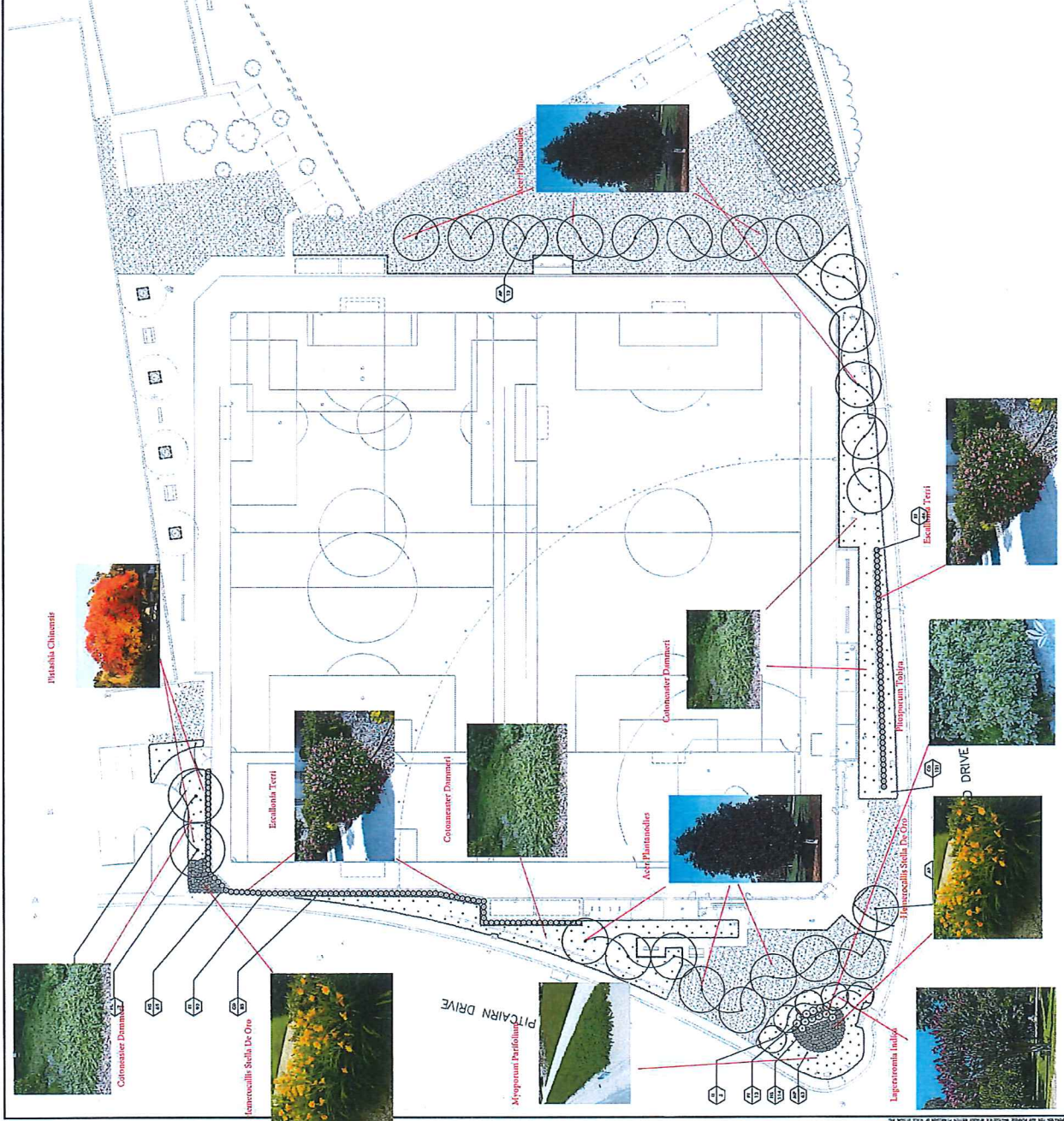
DATE: 11/27/14
 BY: RNF/PAJ
 CHECKED BY: CHMS / DC
 DATE: 03/06/17
 SCALE: 1"=30'-0"
 PLOT NO.: 14670000

PLANTING NOTES

- CONTRACTOR SHALL VERIFY ALL PLANTING MATERIALS TO BE USED ARE LISTED IN THE PLANTING LEGEND.
- CONTRACTOR SHALL PLACE PLANTING MATERIALS TO BE USED IN THE PLANTING LEGEND IN THE PLANTING LEGEND.
- CONTRACTOR SHALL PLACE PLANTING MATERIALS TO BE USED IN THE PLANTING LEGEND IN THE PLANTING LEGEND.
- CONTRACTOR SHALL PLACE PLANTING MATERIALS TO BE USED IN THE PLANTING LEGEND IN THE PLANTING LEGEND.
- CONTRACTOR SHALL PLACE PLANTING MATERIALS TO BE USED IN THE PLANTING LEGEND IN THE PLANTING LEGEND.

PLANTING LEGEND

SYMBOL	DESCRIPTION	PLANTING RATE	PLANTING SPECIFICATIONS
1" x 1" (C)	1" x 1" (C) PLANTING	1 PLANTING PER 100 SQ FT	1" x 1" (C) PLANTING
2" x 2" (C)	2" x 2" (C) PLANTING	1 PLANTING PER 400 SQ FT	2" x 2" (C) PLANTING
4" x 4" (C)	4" x 4" (C) PLANTING	1 PLANTING PER 1600 SQ FT	4" x 4" (C) PLANTING
6" x 6" (C)	6" x 6" (C) PLANTING	1 PLANTING PER 3600 SQ FT	6" x 6" (C) PLANTING
8" x 8" (C)	8" x 8" (C) PLANTING	1 PLANTING PER 6400 SQ FT	8" x 8" (C) PLANTING
10" x 10" (C)	10" x 10" (C) PLANTING	1 PLANTING PER 10000 SQ FT	10" x 10" (C) PLANTING
12" x 12" (C)	12" x 12" (C) PLANTING	1 PLANTING PER 14400 SQ FT	12" x 12" (C) PLANTING
14" x 14" (C)	14" x 14" (C) PLANTING	1 PLANTING PER 19600 SQ FT	14" x 14" (C) PLANTING
16" x 16" (C)	16" x 16" (C) PLANTING	1 PLANTING PER 25600 SQ FT	16" x 16" (C) PLANTING
18" x 18" (C)	18" x 18" (C) PLANTING	1 PLANTING PER 32400 SQ FT	18" x 18" (C) PLANTING
20" x 20" (C)	20" x 20" (C) PLANTING	1 PLANTING PER 40000 SQ FT	20" x 20" (C) PLANTING
22" x 22" (C)	22" x 22" (C) PLANTING	1 PLANTING PER 48400 SQ FT	22" x 22" (C) PLANTING
24" x 24" (C)	24" x 24" (C) PLANTING	1 PLANTING PER 57600 SQ FT	24" x 24" (C) PLANTING
26" x 26" (C)	26" x 26" (C) PLANTING	1 PLANTING PER 67600 SQ FT	26" x 26" (C) PLANTING
28" x 28" (C)	28" x 28" (C) PLANTING	1 PLANTING PER 78400 SQ FT	28" x 28" (C) PLANTING
30" x 30" (C)	30" x 30" (C) PLANTING	1 PLANTING PER 90000 SQ FT	30" x 30" (C) PLANTING



NORTH

1" = 30' - 0"

PLANTING PLAN



Sea Cloud Park Project

Soccer Field S1, S2 and Baseball Field B1 Synthetic Turf Installation - CIP 659



1. What is the scope of the Sea Cloud Park project?

- Replacing natural grass sports fields with synthetic sports turf
- Grading, drainage, electrical, re-route water fountain lines, re-route irrigation main lines
- Landscaping improvements which will include removal of diseased trees

2. Why are 29 existing trees recommended for removal?

The majority of the trees are diseased by Pine Beetles and Pine Pitch Canker. Removing the trees will eliminate concerns about safety as well as damage to valuable infrastructure.



3. What is being recommended in place of these trees and why?



The City is recommending that the 29 trees be replaced with 22 Acer Platanoides Crimson Sentry, 5 Lagerstroemia Indica 'Tuscrora', and 2 Pistacia Chinensis.

These species of trees are successful in Foster City climate and soil conditions. The selected trees do not have invasive roots, are disease resistant, grow well in Foster City, and have a pleasant contrasting color.

4. How will this project benefit the community?

- This project will save an estimated 2 million gallons of water per year which equates to nearly \$13,000 in savings annually.
- The new turf installation will allow for more efficient use of the athletic fields.
- The new fields and landscape will have lower maintenance costs.
- The community will be able to enjoy the fields year round with more play time due to a more effective drainage system.

5. What is the timeline of the proposed project?

If the City Council approves the scope in May, the project is anticipated to begin in June with completion by September 2017.

6. What is the estimated cost of the project?

The estimated project cost is \$3.45 million. Project funding consists of Park-in-Lieu Funding in the amount of \$2,950,000 and City CIP funding in the amount of \$500,000, which will be reimbursed by Foster City youth sports groups.

For more information:

Jennifer Liu | jliu@fostercity.org | (650) 286-3390

Parks and Recreation Director

650 Shell Blvd.

Foster City, CA, 94404

www.fostercity.org