

- 3.0.0 GARDEN STRUCTURES, such as raised decks, above-ground spas and pools, trellises and covers, wind and privacy screens, gazebos, and utility/potting sheds.
- 3.1.0 MATERIALS
- 3.1.1 Masonry, concrete, or natural stone. Colors and textures as in 1.0.0, STRUCTURES AT GRADE.
- 3.1.2 Redwood or cedar. Paint or stain to match house and trim, or yearly applications of clear sealer.
- 3.1.3 Glass. Plexiglas and other transparent substitutes, however, are not allowed.
- 3.2.0 LOCATIONS
- 3.2.1 Allowable in rear yards only within an area defined by projection of the house walls and to within eighteen (18) inches of the rear yard property line, excepted as noted:
- 3.2.2 A supporting post may be no closer than 5 feet to a side property line.
- 3.2.3 A canopy roof line or raised decking may extend no closer than eighteen (18) inches to the side or rear property lines.
- 3.2.4 The allowable height of the canopy or ridge line is controlled by window heads and fascia trims, and is different for each model. These conditions are shown on page 11, TRELLIS AND TERRACE. However, a canopy, ridge, or roof line closer than 5 feet to any property line may not exceed 7 feet - 6 inches in height.
- 3.2.5 Above ground pools and spas may not exceed 100 square feet in surface area, and may extend no more than 4 feet above grade.
- 3.3.0 PRECAUTIONS
- 3.3.1 Conform to the Foster City building codes where applicable. Approval of the architectural committee of Alden Crossing is required and, additionally, the homeowners must receive Planning Division and/or Planning Commission approval prior to installation.
- 3.3.2 See page 11, "TRELLIS AND TERRACE" for correlative information and other requirements.
- 3.3.3 Structural independence from the dwelling is to be maintained. Engineering, architectural, or landscape architectural services are required.

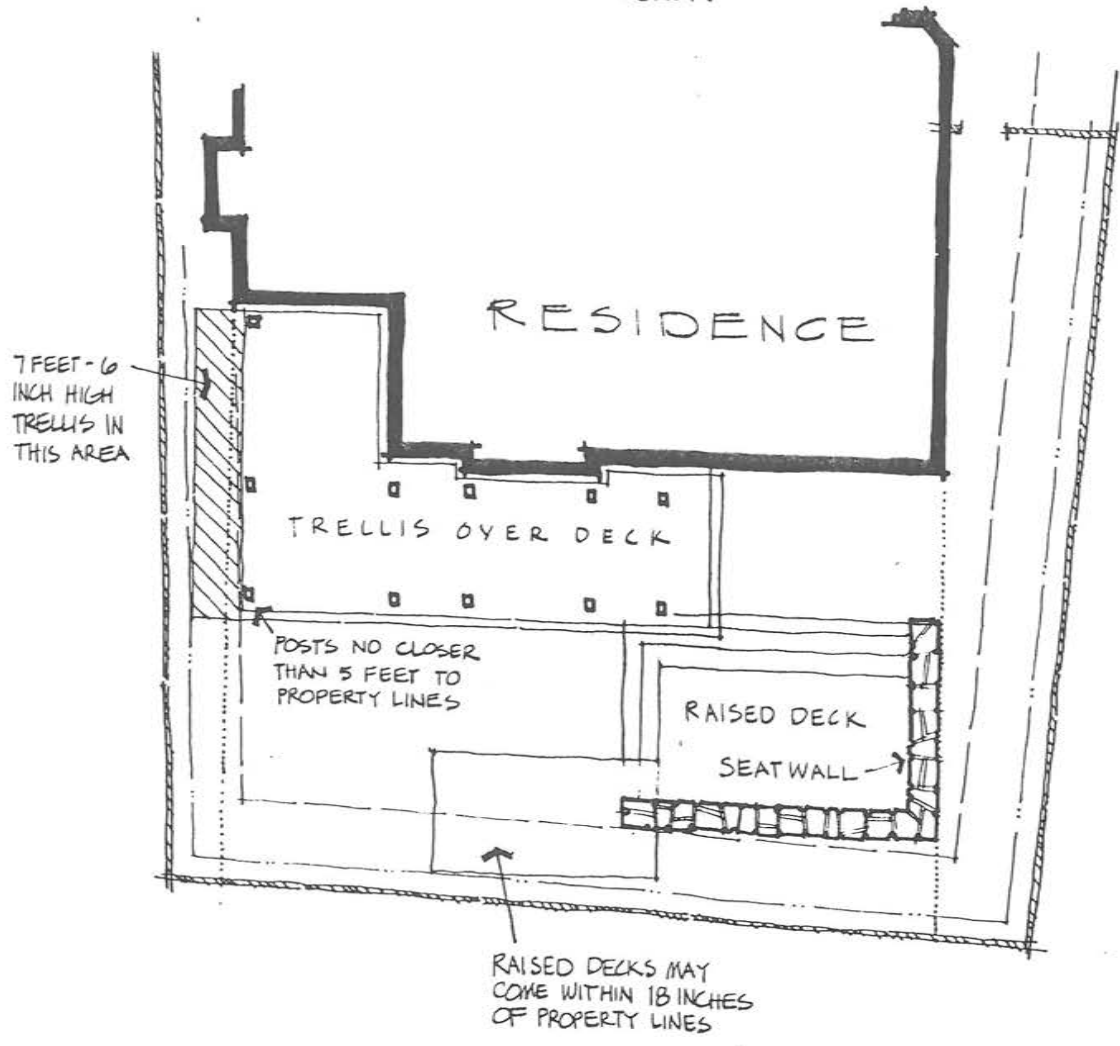
END

EMERY ROGERS and ASSOCIATES
Landscape Architects

249 Front Street
San Francisco, CA 94111
(415) 398-8818

GARDEN STRUCTURES, such as raised decks, above-ground spas and pools, trellises and covers, wind and privacy screens, gazebos, and utility/potting sheds.

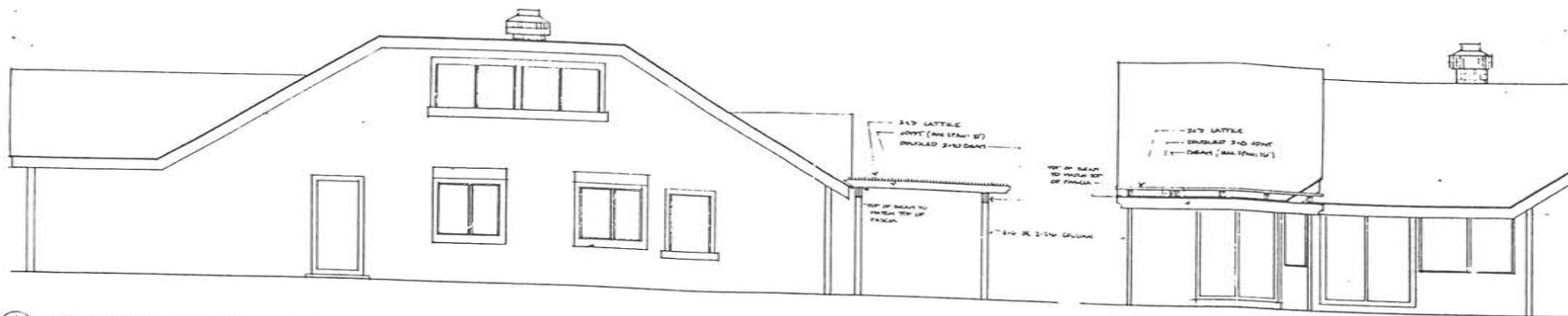
- - - - - FENCE/APPROX. PROP. LINES
 - - - - - 5 FOOT SETBACK LINES
 - - - - - HOUSE WALL PROJECTIONS
 - - - - - 18 INCH SETBACK



EMERY ROGERS and ASSOCIATES
 Landscape Architects

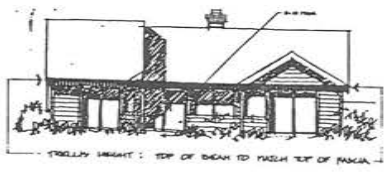
249 Front Street
 San Francisco, CA 94111
 (415) 398-8818

GARDEN STRUCTURES, such as raised decks, above-ground spas and pools, trellises and covers, wind and privacy screens, gazebos, and utility/potting sheds.



1
7
PROTOTYPE TRELLIS HOUSE MODEL #1, SIDE ELEVATION, NO SCALE

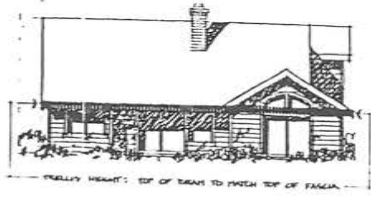
REAR ELEVATION, NO SCALE



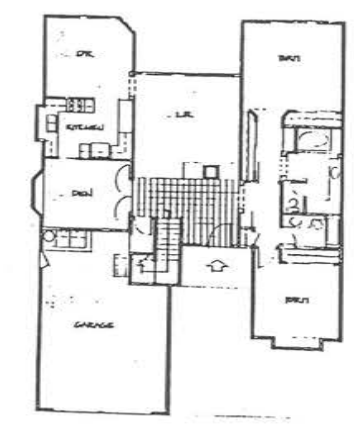
REAR ELEVATION, MODEL #1



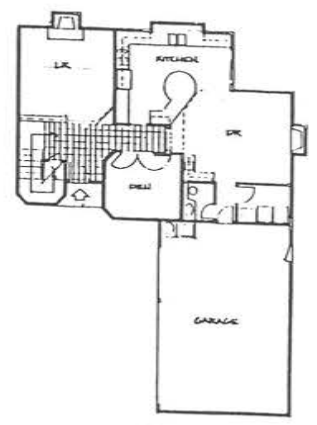
REAR ELEVATION, MODEL #2



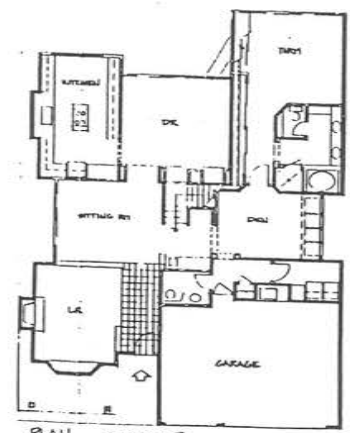
REAR ELEVATION, MODEL #3



PLAN, MODEL #1

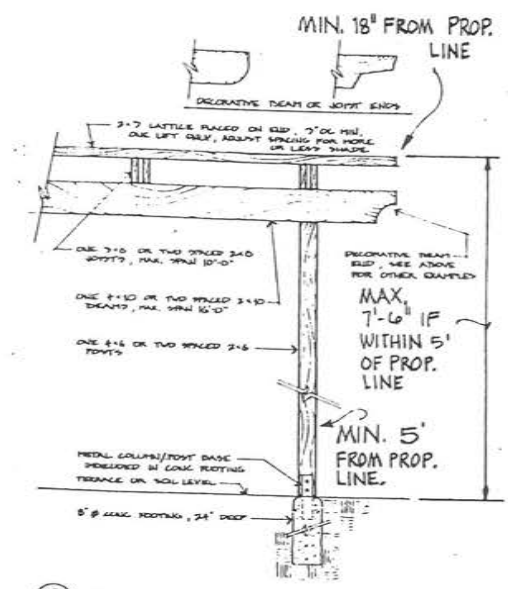


PLAN, MODEL #2



PLAN, MODEL #3

2
7
TERRACE AND TRELLIS PLACEMENT, ALL HOUSE MODELS, NO SCALE



3
7
TRELLIS CONSTRUCTION DETAIL, 3/4" = 1'-0"

- NOTES:
1. TRELLIS IS NOT TO BE ATTACHED TO HOUSE IN ANY WAY.
 2. SUPPORTING COLUMNS MAY NOT BE CLOSER THAN 5 FEET FROM SIDE PROPERTY LINE.
 3. CANOPY LINE MAY NOT BE CLOSER THAN 18 INCHES TO REAR PROPERTY LINE.
 4. CANOPY LINE MAY NOT BE CLOSER THAN 18 INCHES TO SIDE PROPERTY LINE.
 5. CANOPY LINE WHERE CLOSER THAN 5 FEET TO SIDE PROPERTY LINE MAY NOT EXCEED 7 FEET 6 INCHES IN HEIGHT.
 6. TRELLIS CONSTRUCTION TO BE OF REDWOOD OR CEDAR, SURFACED ON ALL SIDES, CONSTRUCTION HEART OR BETTER.
 7. PAINT OR STAIN TO MATCH HOUSE AND TRIM, OR CLEAR SEALER.

EMERY ROGERS and ASSOCIATES
Landscape Architects
San Francisco

248 Front Street
San Francisco, CA 94111
(415) 388-8818



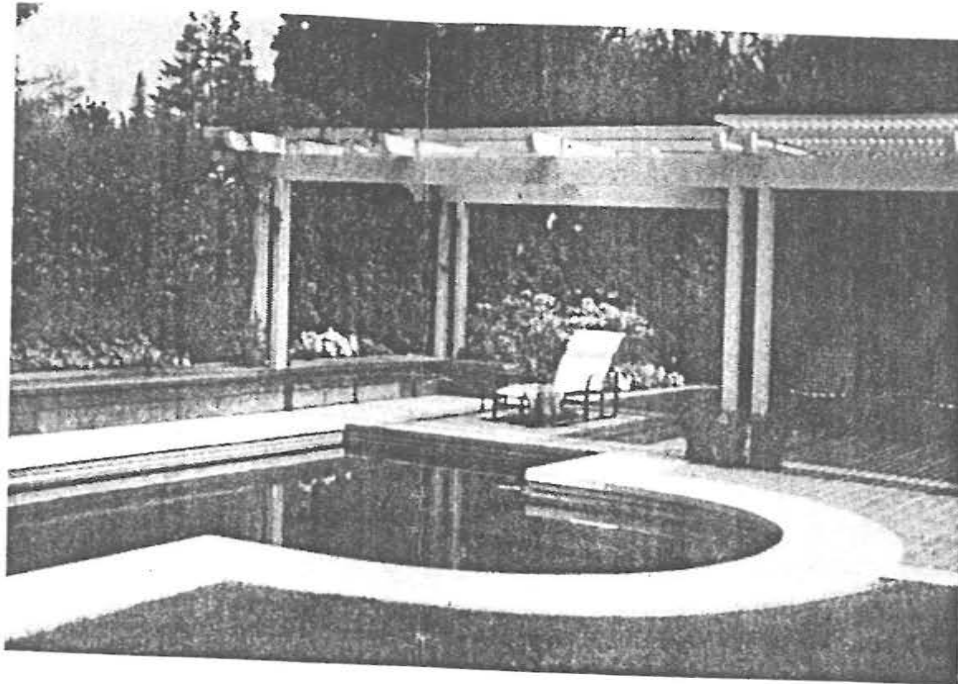
ALDEN
CROSSING
ROSTER CITY PARCELS ONE
FOR THE ALDEN COMPANY
411 BOREL AVENUE
SUITE 114
SAN MATEO, CA 94401

TRELLIS AND
TERRACE
(HEDERA LANCEOLATA)

EMERY ROGERS and ASSOCIATES
Landscape Architects

249 Front Street
San Francisco, CA 94111
(415) 398-8818

Typical Patio Cover



EMERY ROGERS and ASSOCIATES
Landscape Architects

249 Front Street
San Francisco, CA 94111
(415) 398-8818

Example of a
Utility/Potting Shed

