



San Mateo Consolidated Fire Department

FALL 2023
CITY OF FOSTER CITY
CIVICS ACADEMY
SEPTEMBER 27, 2023

San Mateo Consolidated Fire Department

Presenters:

Fire Chief - Kent Thrasher

Fire Marshal/Deputy Chief - Robert Marshall

Emergency Services Manager - Jim Yoke

CERT – Emergency Services Specialist – Sandra Firpo

Organizational Priorities

1. Mission, Vision, Values
2. Safety (Community and First Responders)
3. Emergency Response
4. Apparatus and Equipment Readiness
5. F.A.C.T. (Participatory Management)
6. Training
7. Fire Inspections (Fire Prevention and Pre-Plans)
8. Community Education and Outreach (Emergency Preparedness, CERT)

San Mateo Consolidated Fire Stations



Belmont Station 14—
911 Granada St.
Engine 14—3 personnel
Hazmat 14—cross staffed



Belmont Station 15—
2701 Cipriani Blvd.
Engine 15—3 personnel



San Mateo Station 21—
120 S. Ellsworth Ave.
Engine 21—3 personnel
Truck 21—4 personnel
Hose Tender

San Mateo Consolidated Fire Stations



San Mateo Station 23—
31 West 27th Ave.
Engine 23—3 personnel
Truck 23—4 personnel
Battalion 5



San Mateo Station 24—
319 S. Humboldt St.
Engine 24—3 personnel



San Mateo Station 25—
1455 Shafter St.
Engine 25—3 personnel

San Mateo Consolidated Fire Stations



San Mateo Station 26—
1500 Marina Ct.
Engine 26—3 personnel



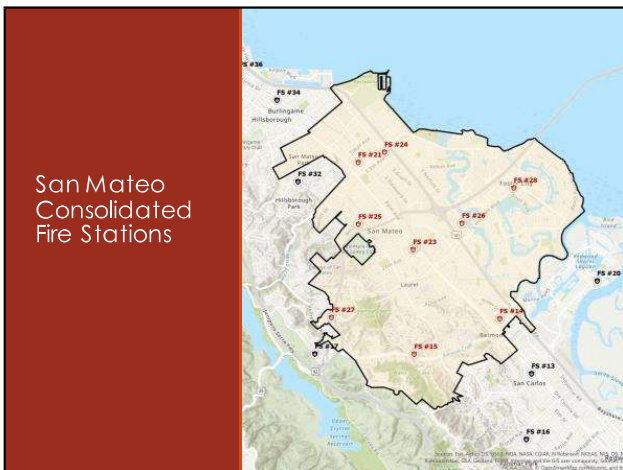
San Mateo Station 27—
1801 DeAnza Blvd.
Engine 27—3 personnel;
OES 405; E2609; E2610 (Type 6)



Foster City Station 28—
1040 E. Hillsdale Blvd.
Engine 28—3 personnel
Engine 29—3 personnel
Boat 28; Jet Ski 28A & 28B







Engine vs. Truck



Engine 28



Truck 21

Operations Services Provided – All Risk

Emergency Response Types

- Fire, Advanced Life Support, Traffic Accidents, Hazardous Materials, Explosions, Confined Space and Collapse Rescue and WMD/Terrorism

Specialized Training

- Paramedics
- Trench Rescue
- Hazmat
- Wildland/Urban Interface
- Confined Space
- Rope Rescue
- Water Rescue

Non-Emergency

- Fire and Life Safety Inspections
- Service Calls





Mutual Aid Response

2021 STATE MUTUAL AID RESPONSES

Mutual Aid Response

2018 FEDERAL MUTUAL AID RESPONSE



FEMA TF3 Hurricane Deployment

INCIDENTS BY TYPE & APPARATUS RESPONSES

INCIDENT TYPE	INCIDENTS	APPARATUS RESPONSES
Emergency Medical Services	9,783	10,448
False Alarms & False Calls	986	1,459
Fires	287	806
Good Intent Calls	1,613	2,086
Hazardous Conditions	302	493
Overpressures, Ruptures, Explosions, Overheat	16	34
Rescues	878	2,201
Service Calls	1,212	1,392
Severe Weather & Natural Disasters	55	70
Special Incident Types, Other	24	29
TOTAL	15,136	19,018

Calls for Service 2022

Training Division Overview

The Primary mission of the SMC Fire Department Training Division is to provide on-going training, education and certification to fire service personnel necessary to insure a competent, efficient and effective emergency response organization.

- SMCFD Training Division is staffed by:
- (1) Battalion Chief
 - (2) Training Captains
 - (1) EMS Manager
 - (1) Administrative Assistant



EMS Training

Operations

Basic Life Support (BLS)

- Emergency Medical Technician (EMT)
 - Basic First Aid
 - CPR
 - Assist Paramedic

Advanced Life Support (ALS)

- Paramedic (Medic)
 - Advanced Cardiac Life Support (ACLS)
 - Pediatric Advanced Life Support (PALS)
 - Prehospital Trauma Life Support (PHTLS)



Firefighter Training

Operations

- Driver Training
- Structural Firefighting
- Wildland Firefighting
 - Local
 - State
- Forcible Entry
- Urban Search and Rescue
- Multi-Casualty Incidents
- Hazardous Materials
- Weapons of Mass Destruction
- Active Shooter
- Auto Extrication
- Water Rescue

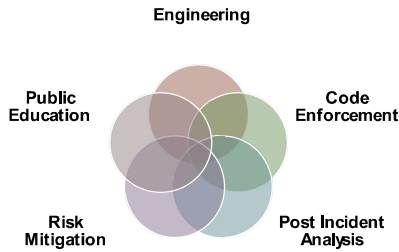


Community Risk Reduction Division (CRR)

The goal of the Community Risk Reduction is to provide a resilient and sustainable community, by reducing the risk of injury and loss of life and property from the effects of fire and other emergencies or events.



Community Risk Reduction Division (CRR)



Bureau of Fire Protection & Life Safety



Bureau of Fire Protection & Life Safety Services

Plan Review and Construction Inspections

- Fire Alarm and Sprinkler Systems
- Special Fire Protection Systems
- Construction – New and Tenant Improvement



Bureau of Fire Protection & Life Safety Services

Life/Safety Inspections

- Multi-Residential
- Schools – Public and Private
- Hospitals
- Elderly Care Facilities
- High Rise
- Places of Assembly
- Day Care
- Commercial Occupancies



Bureau of Fire Protection & Life safety

Code Development

- State adoption
- Local amendments

Code Compliance Consultation

- Large development
- Technical

Wildland Urban Interface

- Code enforcement
- Vegetation management

Public Education

- Schools
- Community

Fire Cause & Origin Investigation

- State law requirements



Bureau of Fire Protection & Life Safety Services

2022 BUREAU STATISTICS

MANDATED FIRE INSPECTIONS				
OCCUPANCY	TOTAL BUILDINGS	TOTAL INSPECTED	TOTAL COMPLETED	BUILDINGS NOT INSPECTED IN 2 YEARS
High Rise	27	27	100%	0
Schools	58	58	100%	0
Residential	1,841	1,823	99%	0
Jails	2	2	100%	0



Threats to Our Communities

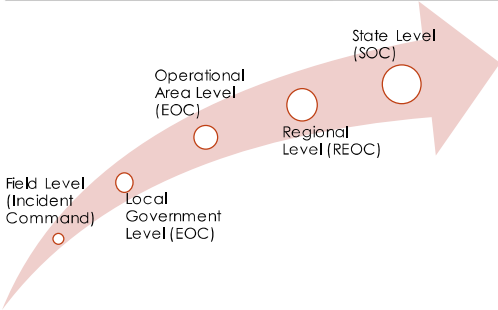
Natural Disasters	Man-made
<ul style="list-style-type: none"> • Winter Storms • Floods/Landslides • Fires • Earthquakes • Tsunami • Epidemics/Pandemics 	<ul style="list-style-type: none"> • Transportation Accidents (Rail, Air, Bus) • Hazardous Materials • Terrorism • Water and Power • Fuels – Gas and Liquid

Earthquake Outlook for the San Francisco Bay Region 2014-2043

- 72% probability of a magnitude 6.7 or greater earthquake
- Percentages within each circle is probability that a magnitude 6.7 or greater earthquake will occur somewhere on that fault system by the year 2043.
- The probability that a magnitude 6.7 or greater earthquake will involve one of the lesser-known faults is 13%.

The map displays the San Francisco Bay Area with various fault systems highlighted in different colors. A legend lists 30 faults, including major ones like the Hayward, San Andreas, and San Francisco Bay faults. A text box on the map states: "72% probability of one or more M6.7+ earthquakes from 2014 to 2043 in the San Francisco Bay Region". An "EXPLANATION" legend indicates that thick lines represent major plate boundary faults, thin lines represent lesser-known smaller faults, and shaded areas represent urban areas. A scale bar shows 0, 1, 2 miles and 0, 1, 2 kilometers.

Emergency Operations Centers (EOC)



Five Broad Areas Of Program Emphasis

- **Prevention** – Homeland Security oriented
- **Preparedness** – getting the City ready
- **Mitigation** – reducing the severity of disaster consequences
- **Response** – lights are flashing & sirens are blaring
- **Recovery** – putting the City back together again

Thirteen Specific Areas Of Emphasis

- | | |
|------------------------|--|
| ❖ Planning | ❖ Public Education |
| ❖ Training | ❖ Volunteer Programs |
| ❖ Exercising | ❖ Event Planning |
| ❖ Facilities | ❖ Community Outreach |
| ❖ Supplies & Equipment | ❖ Partner Agency Planning & Organizing |
| ❖ Technology | ❖ Budgets & Grants |
| ❖ Public Education | ❖ Marketing & Public Information |

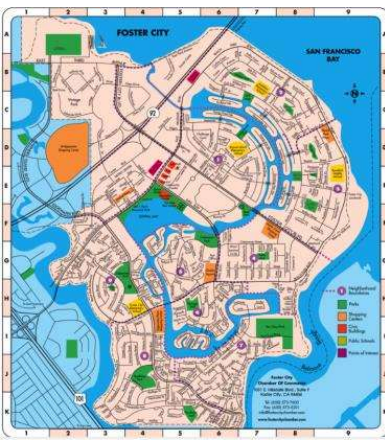
SMCFD Public Education Programs

All classes are offered to anyone living or working in San Mateo, Foster City and Belmont:

- Community Emergency Response Team (CERT):** 25-hour disaster response course
- Get Ready / Prepárese:** 2-hour disaster preparedness course
- LISTOS:** 8-hour preparedness course in Spanish
- CPR/AED:** American Heart Association Adult & Child
- First Aid:** American Heart Association Curriculum

How CERT Works

- Almost 800 active volunteers in SMCDF CERT Database.
- Foster City is divided into 9 Neighborhoods
- Roles for CERT:
 - Prepare yourself, family & Home
 - Assist neighbors when disaster strikes
 - Work as part of the emergency response team
 - "Doing the Greatest Good for the Greatest Number"



CERT Member Activities

- Encouraged to take additional training (first aid, radio, pets, etc.)
- Graduates assist at Skills Day and other Public Education events
- Deployed as patrols to assist Fire and Police during major events
- Teach and assist with Continuing Education courses
- Participate in both neighborhood and city-wide training and drills



Personal Preparedness

Waiting until after the disaster is too late!

- ✓ Address hazards in the home
- ✓ Plans for children, pets, special needs or elderly
- ✓ Communication Needs
- ✓ Transportation Routes
- ✓ Have a disaster kit at home, in the car, at your workplace



Tours by On Duty Crews & Battalion Chief

- Engine / Truck
- Station Tour
- Fire Extinguisher

San Mateo Consolidated Fire Department

- Email: fire@smcfire.org
- Website: www.smcfire.org
- Follow us on Social Media [@SMCFireDept](https://www.instagram.com/SMCFireDept)
