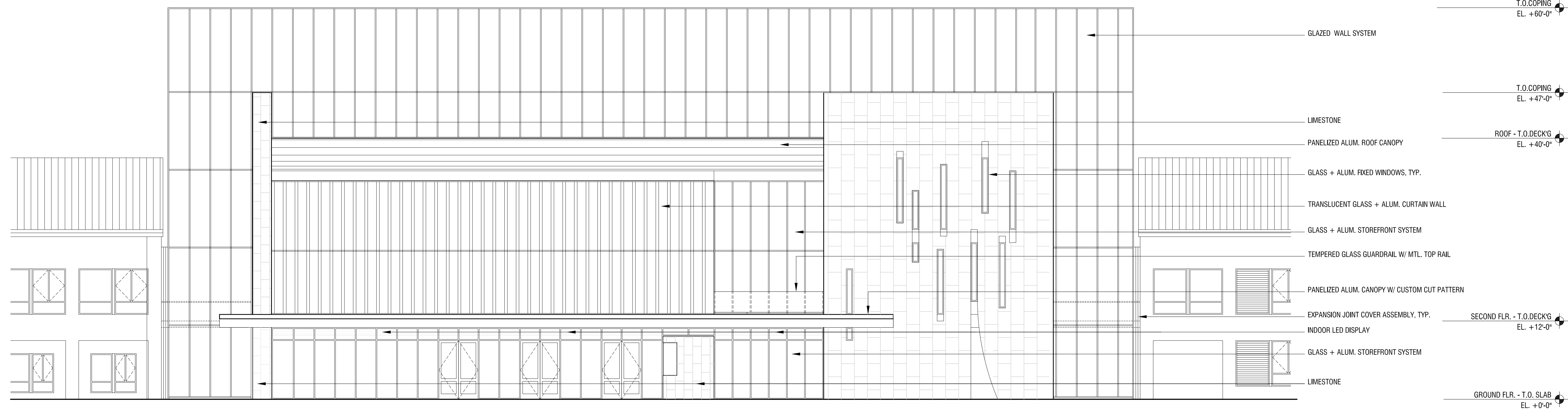


2 SOUTH ELEVATION
A3.01 SCALE: 1/8" = 1'-0"



1 NORTH ELEVATION
A3.01 SCALE: 1/8" = 1'-0"

Disclaimer:
Written dimensions on these drawings shall have precedence over scaled dimensions. Contractors shall verify, and be responsible for, all dimensions and conditions on the job and this office must be notified of any variations from the dimensions and conditions shown by these drawings. Shop details must be submitted to this office for approval before proceeding with fabrication.

Key Plan:

General Notes/Legend:

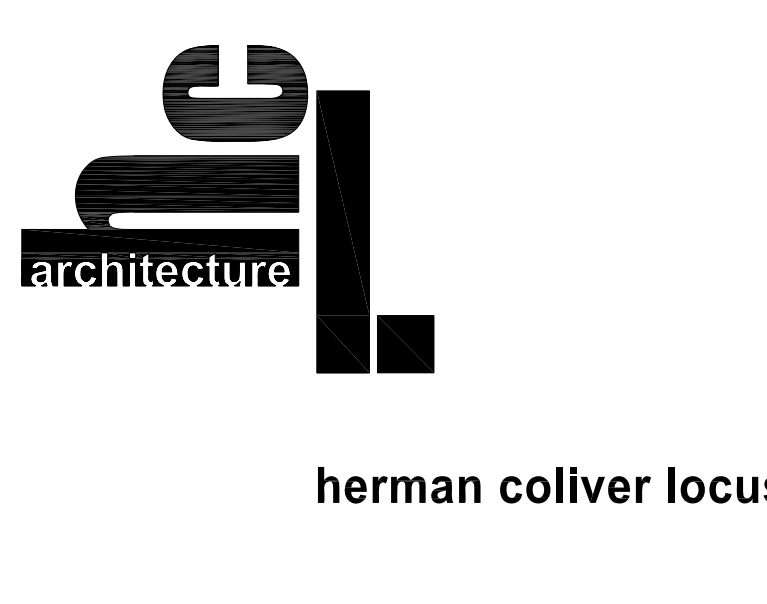
Stamp:

Issue	Date
STUDY SESSION SUBMITTAL	12.05.08

Project Title:
NPJC CultureWorks
Foster City, CA 94404

Sheet Title:
BUILDING ELEVATIONS

Scale:
1/8" = 1'-0"



363 Clementina Street . San Francisco . CA 94103
T 415 495 1776 . F 415 552 9811 . E info@hclarchitecture.com

Drawn By: KH
Checked: KH/DM
Associate: DM

Sheet Number: **A8**

Disclaimer:
 Written dimensions on these drawings shall have precedence over scaled dimensions. Contractors shall verify, and be responsible for, all dimensions and conditions on the job and this office must be notified of any variations from the dimensions and conditions shown by these drawings. Shop details must be submitted to this office for approval before proceeding with fabrication.

Key Plan:

General Notes/Legend:

Stamp:

Issue	Date
STUDY SESSION SUBMITTAL	12.05.08

Project Title:
NPJC CultureWorks

Foster City, CA 94404

Sheet Title:
BUILDING ELEVATIONS

Scale:
 1/8" = 1'-0"

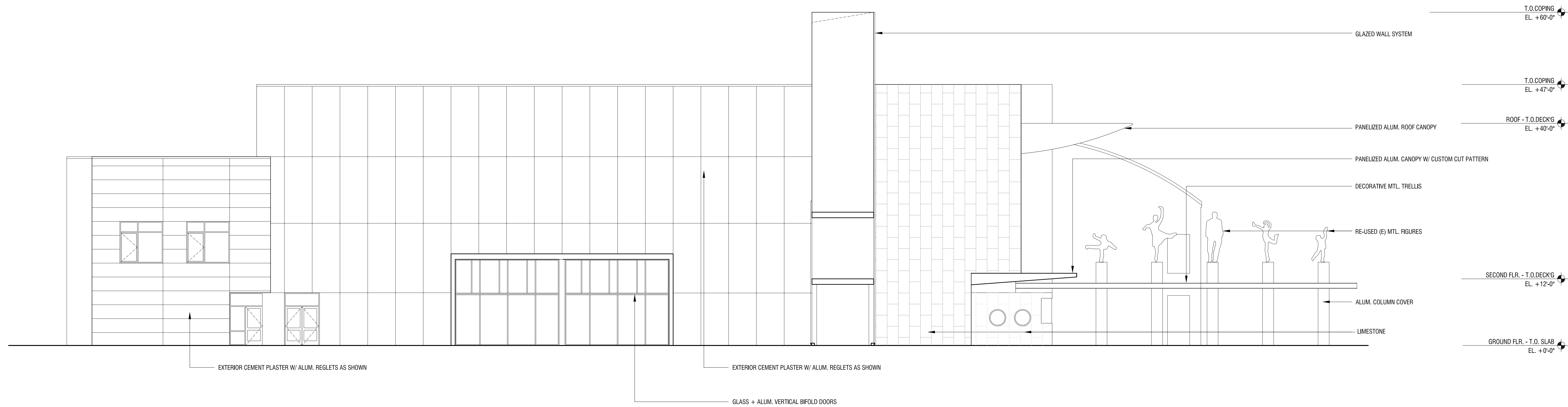


herman coliver locus
 architecture

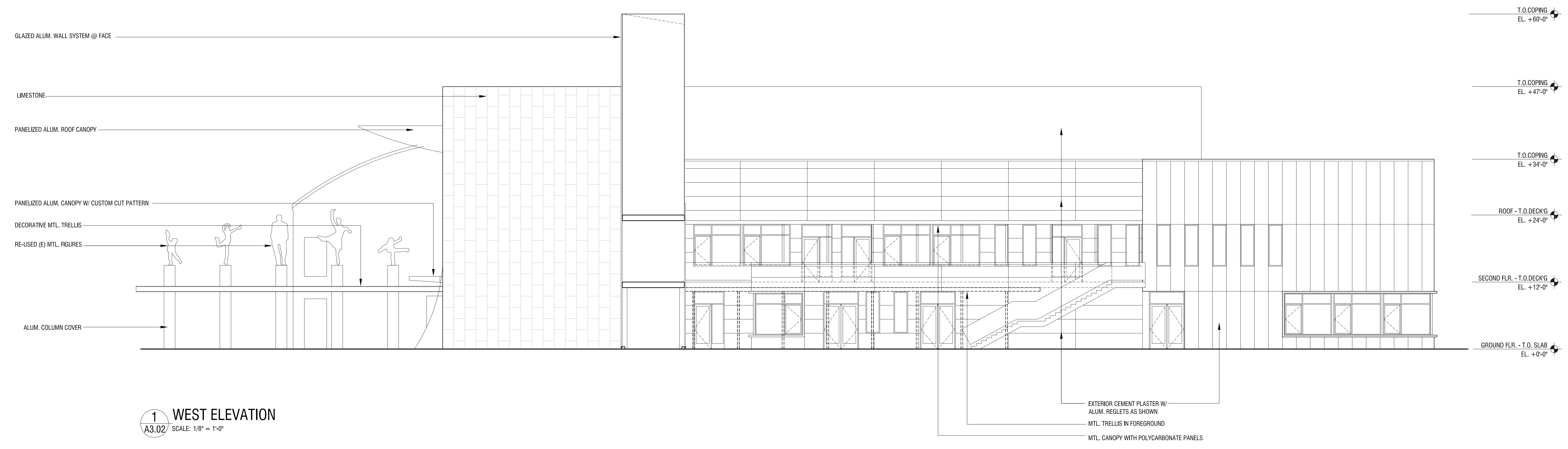
363 Clementina Street . San Francisco . CA 94103
 T 415 495 1776 . F 415 552 9811 . E info@hclarchitecture.com

Drawn By: KH
 Checked: KH/DM
 Associate: DM

Sheet Number: **A9**



2 EAST ELEVATION
 A3.02 SCALE: 1/8" = 1'-0"



1 WEST ELEVATION
 A3.02 SCALE: 1/8" = 1'-0"