

**Disclaimer:**  
 Written dimensions on these drawings shall have precedence over scaled dimensions. Contractors shall verify, and be responsible for, all dimensions and conditions on the job and this office must be notified of any variations from the dimensions and conditions shown by these drawings. Shop details must be submitted to this office for approval before proceeding with fabrication.

**Key Plan:**

**General Notes/Legend:**

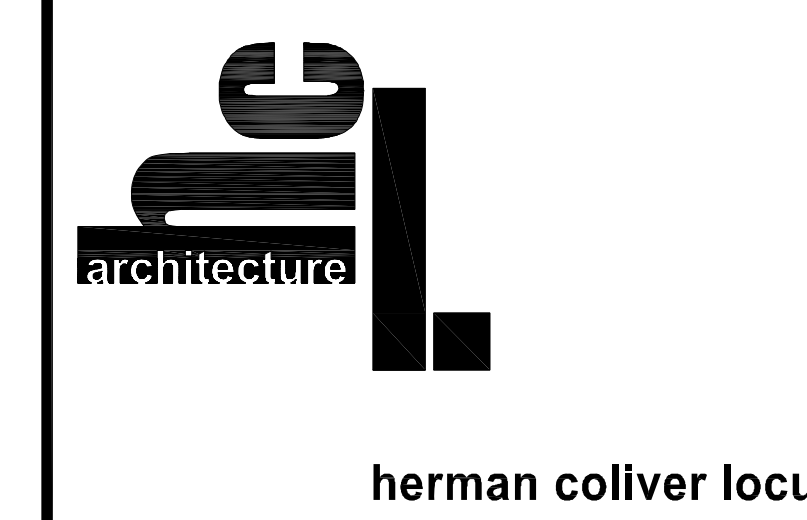
**Stamp:**

Issue	Date
STUDY SESSION SUBMITTAL	12.05.08

**Project Title:**  
**NPJC CultureWorks**  
 Foster City, CA 94404

**Sheet Title:**  
 FLOOR PLAN - GROUND

**Scale:**  
 1/8" = 1'-0"

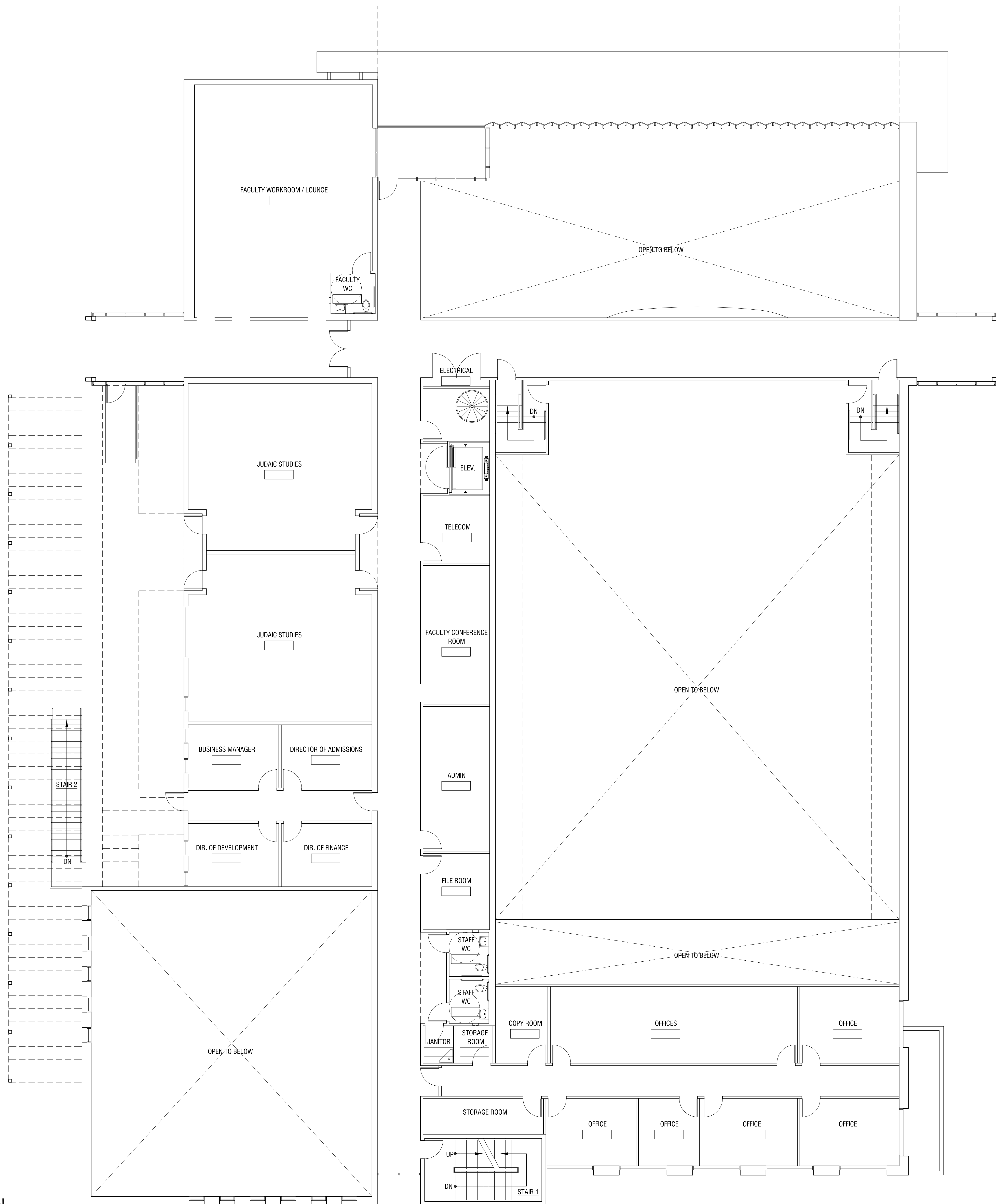


363 Clementina Street . San Francisco . CA 94103  
 T 415 495 1776 . F 415 552 9811 . E info@hclarchitecture.com

Drawn By: KH Sheet Number:  
 Checked: KH/DM  
 Associate: DM **A4**

**1 GROUND FLOOR PLAN**  
 SCALE: 1/8" = 1'-0"

IF THIS SHEET IS SMALLER THAN 30"x42" THEN IT HAS BEEN REDUCED



1 SECOND FLOOR PLAN  
 A2.02 SCALE: 1/8" = 1'-0"

**Disclaimer:**  
 Written dimensions on these drawings shall have precedence over scaled dimensions. Contractors shall verify, and be responsible for, all dimensions and conditions on the job and this office must be notified of any variations from the dimensions and conditions shown by these drawings. Shop details must be submitted to this office for approval before proceeding with fabrication.

**Key Plan:**

**General Notes/Legend:**

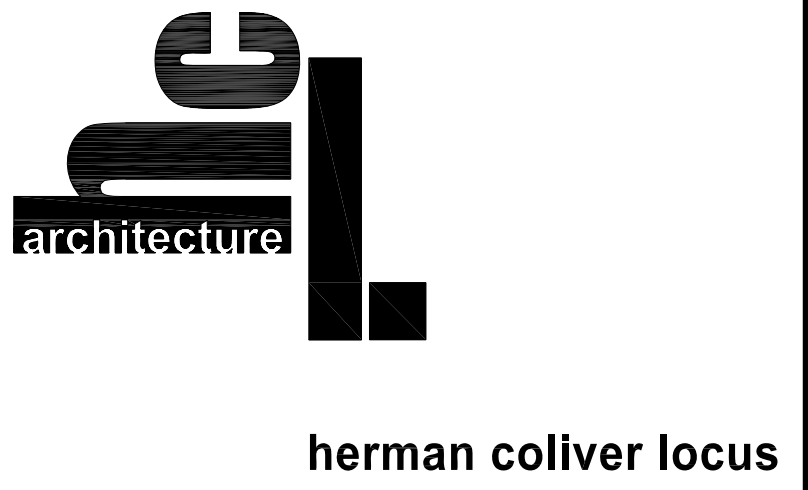
**Stamp:**

Issue	Date
STUDY SESSION SUBMITTAL	12.05.08

**Project Title:**  
**NPJC CultureWorks**  
 Foster City, CA 94404

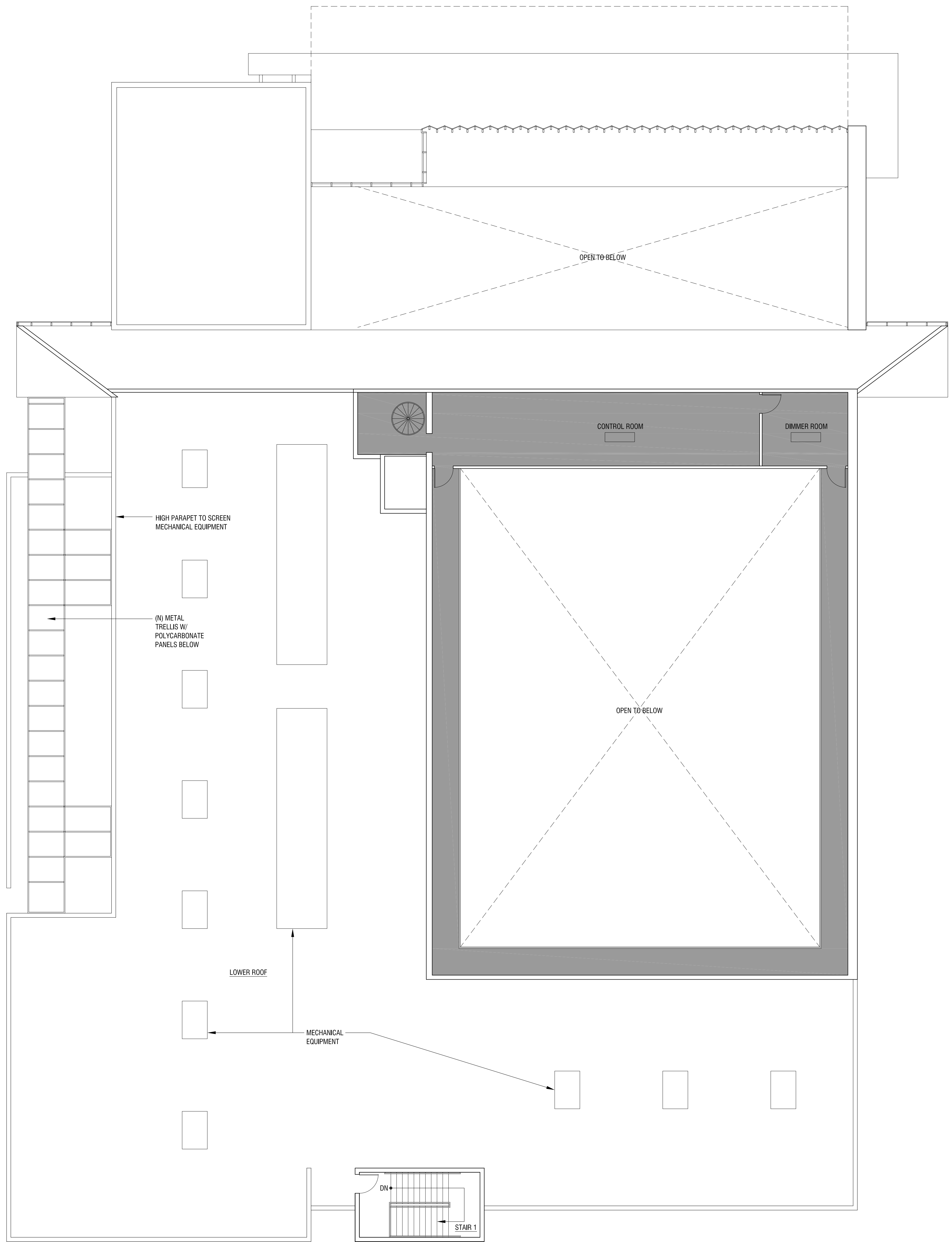
**Sheet Title:**  
 FLOOR PLAN - SECOND

**Scale:**  
 1/8" = 1'-0"



363 Clementina Street . San Francisco . CA 94103  
 T 415 495 1776 . F 415 552 9811 . E info@hclarchitecture.com

Drawn By: KH Sheet Number:  
 Checked: KH/DM **A5**  
 Associate: DM



1 CONTROL ROOM MEZZANINE FLOOR PLAN  
A2.03 SCALE: 1/8" = 1'-0"

**Disclaimer:**  
Written dimensions on these drawings shall have precedence over scaled dimensions. Contractors shall verify, and be responsible for, all dimensions and conditions on the job and this office must be notified of any variations from the dimensions and conditions shown by these drawings. Shop details must be submitted to this office for approval before proceeding with fabrication.

**Key Plan:**

**General Notes/Legend:**

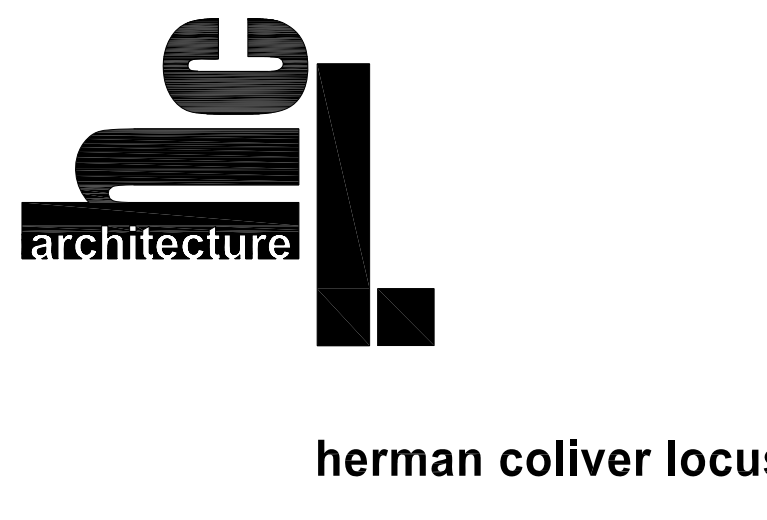
**Stamp:**

Issue	Date
STUDY SESSION SUBMITTAL	12.05.08

**Project Title:**  
**NPJC  
CultureWorks**  
Foster City, CA 94404

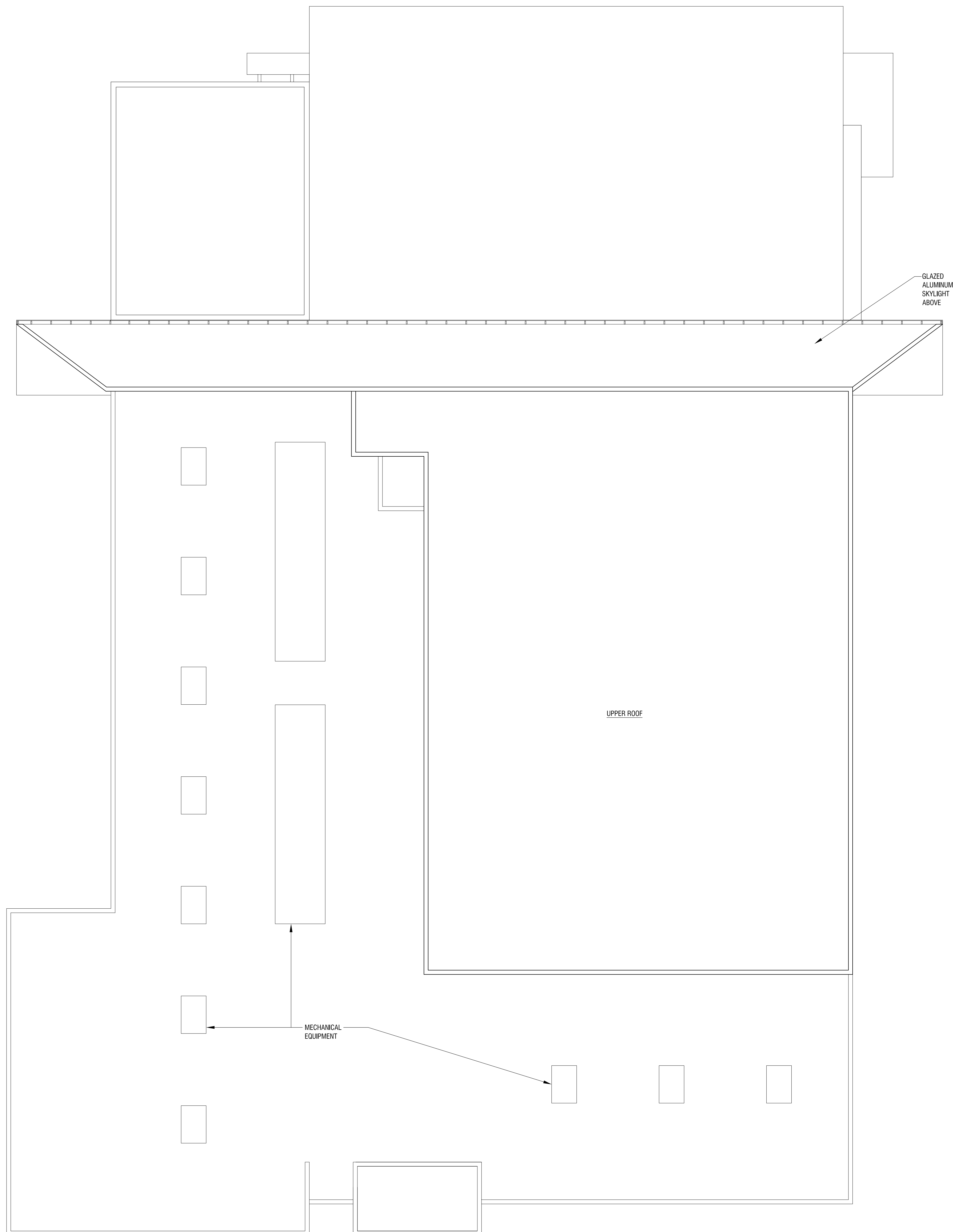
**Sheet Title:**  
FLOOR PLAN -  
CONTROL ROOM MEZZANINE

**Scale:**  
1/8" = 1'-0"

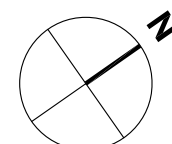


363 Clementina Street . San Francisco . CA 94103  
T 415 495 1776 . F 415 552 9811 . E info@hclarchitecture.com

Drawn By: KH Sheet Number:  
Checked: KH/DM **A6**  
Associate: DM



1 ROOF PLAN  
A2.04 SCALE: 1/8" = 1'-0"



**Disclaimer:**

Written dimensions on these drawings shall have precedence over scaled dimensions. Contractors shall verify, and be responsible for, all dimensions and conditions on the job and this office must be notified of any variations from the dimensions and conditions shown by these drawings. Shop details must be submitted to this office for approval before proceeding with fabrication.

**Key Plan:**

**General Notes/Legend:**

**Stamp:**

Issue	Date
STUDY SESSION SUBMITTAL	12.05.08

**Project Title:**

**NPJC  
CultureWorks**

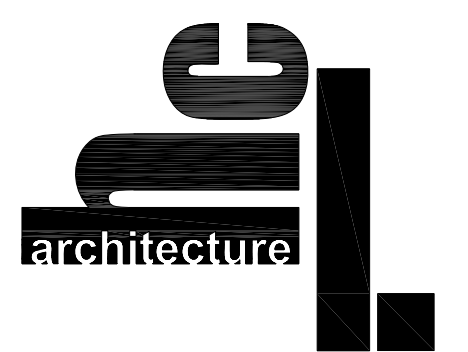
Foster City, CA 94404

**Sheet Title:**

ROOF PLAN

**Scale:**

1/8" = 1'-0"



**herman coliver locus**

363 Clementina Street . San Francisco . CA 94103  
T 415 495 1776 . F 415 552 9811 . E info@hclarchitecture.com

Drawn By:	KHMDJ	Sheet Number:
Checked:	KHDM	<b>A7</b>
Associate:	DM	